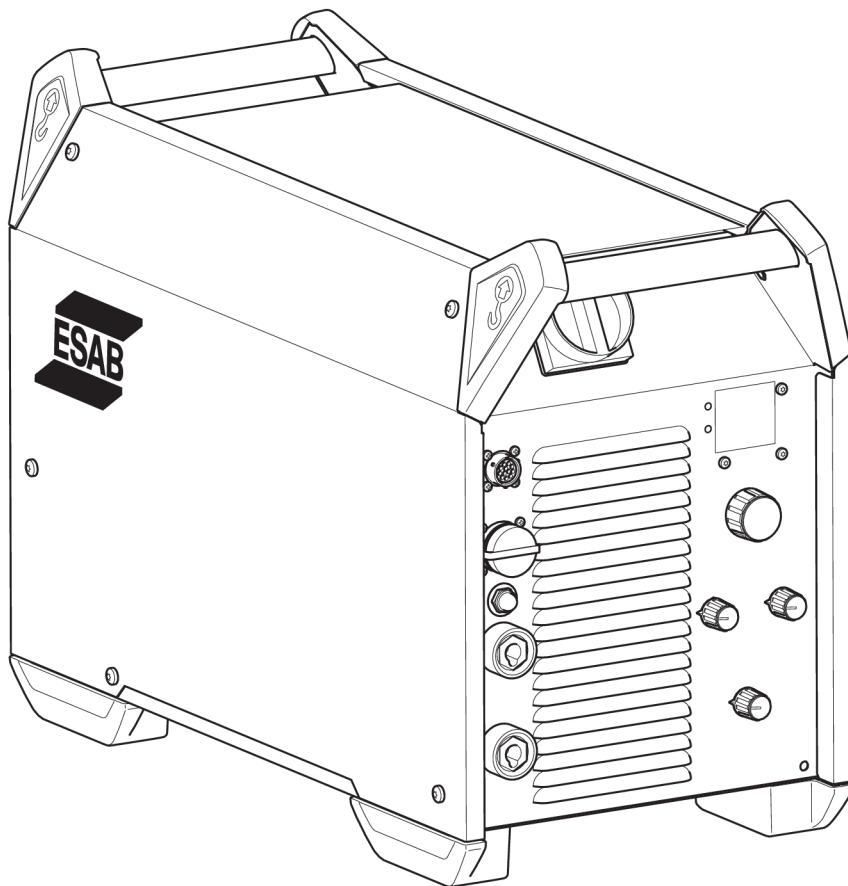




Warrior™ 350i MV CC/CV, Warrior™ 400i MV CC/CV



Spare parts list

Ordering no. Product

0465 885 880 Warrior 400i MV CC/CV, 220-460 V

0465 885 881 Welding power source Warrior™ 350i MV CC/CV, 208-460 V

Spare parts are to be ordered through the nearest ESAB agency. Kindly indicate type of unit, serial number, denominations and ordering numbers according to the spare parts list.

Maintenance and repair work should be performed by an experienced person, and electrical work only by a trained electrician. Use only recommended spare parts.

SPARE PARTS 4

Housing module 4

Power module 6

User interface 10

Mains module..... 10

IPS module 10

Control module..... 12

Secondary connection 12

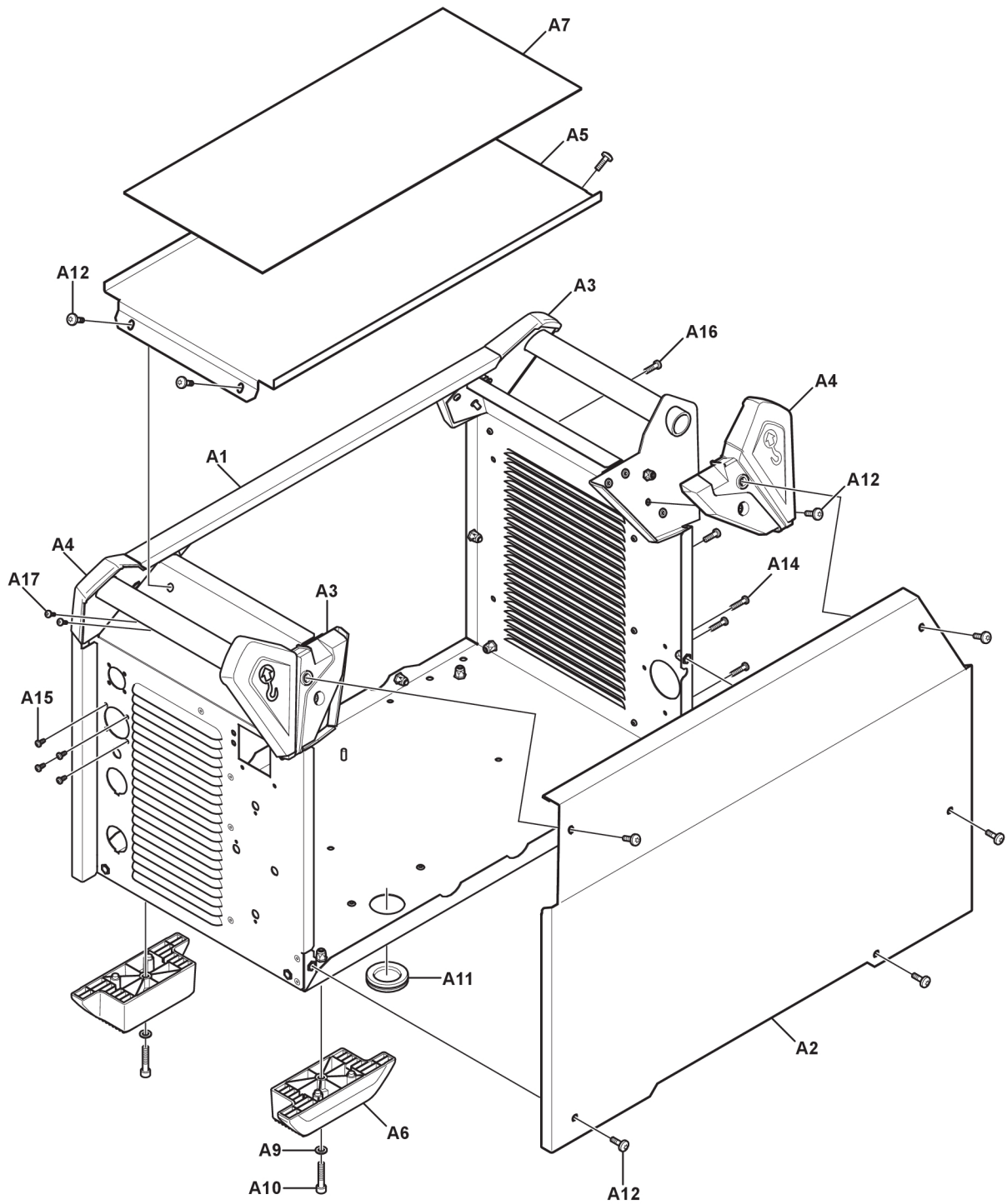
Primary inverter 14

Secondary rectifier 14

 SPARE PARTS

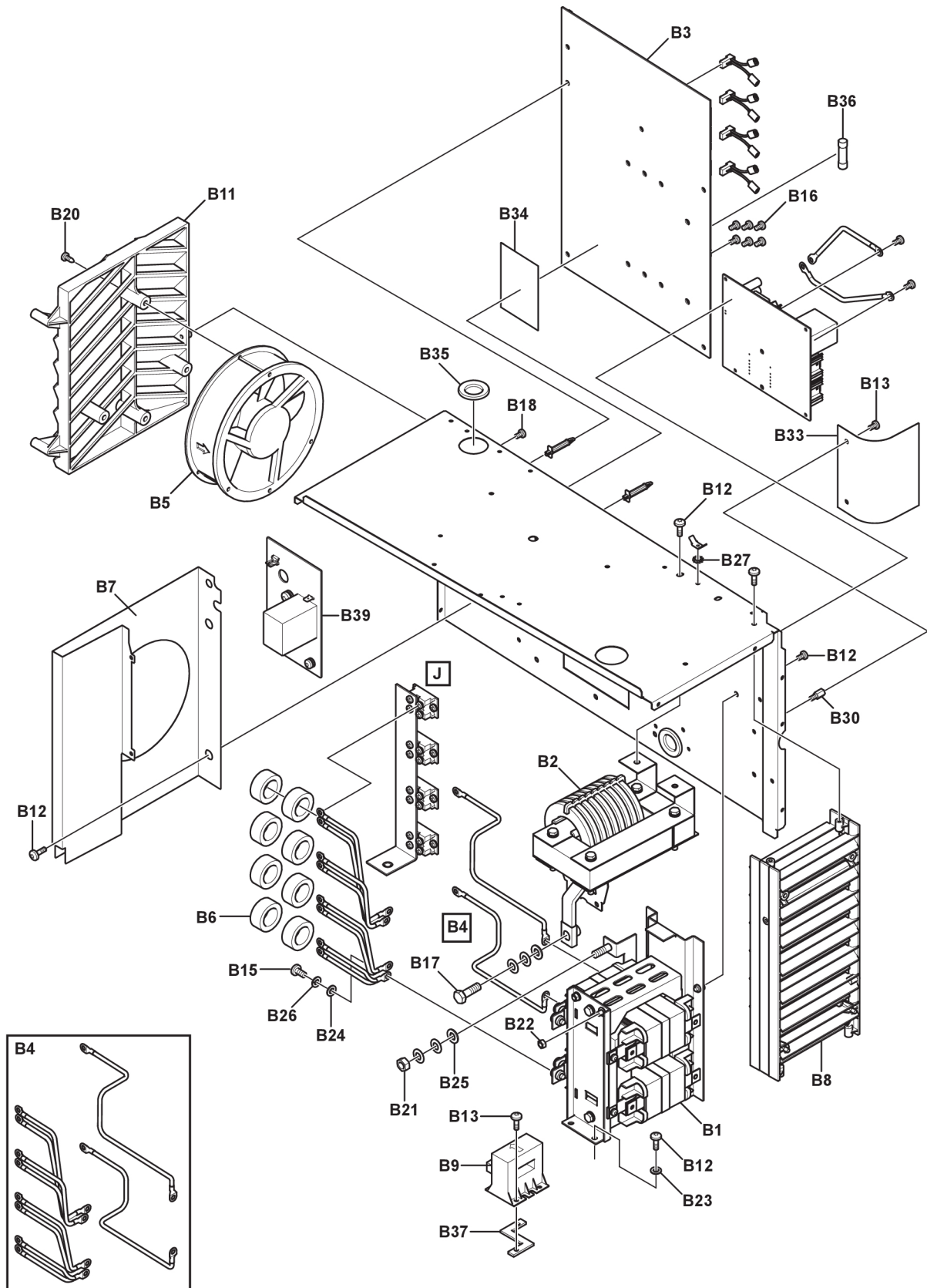
Housing module

Item	Qty	Ordering no.	Denomination	Notes	Component designation
A1	1	0465 375 880	Side panel, left		
A2	1	0465 375 881	Side panel, right		
A3	2	0465 293 002	Handle corner part	Right	
A4	2	0465 293 001	Handle corner part	Left	
A5	1	0465 196 002	Top panel, MV		
A6	4	0465 415 001	Feet		
A7	1	0465 331 001	Rubber mat		
A9	4		Washer BRB	12×6.4×1.5	
A10	4		Screw IN6	M6×30	
A11	1	0194 069 003	Rubber inlet	D 37 mm	
A12	18		Screw MRT	M16×16 black	
A14	3		Screw RX-PT	8 -16×20	
A15	4		Screw RTS	ST3.5, 5×9,5	
A16	2		Screw REMFORM TORX	5×16	
A17	2		Screw MRT	M3×8	



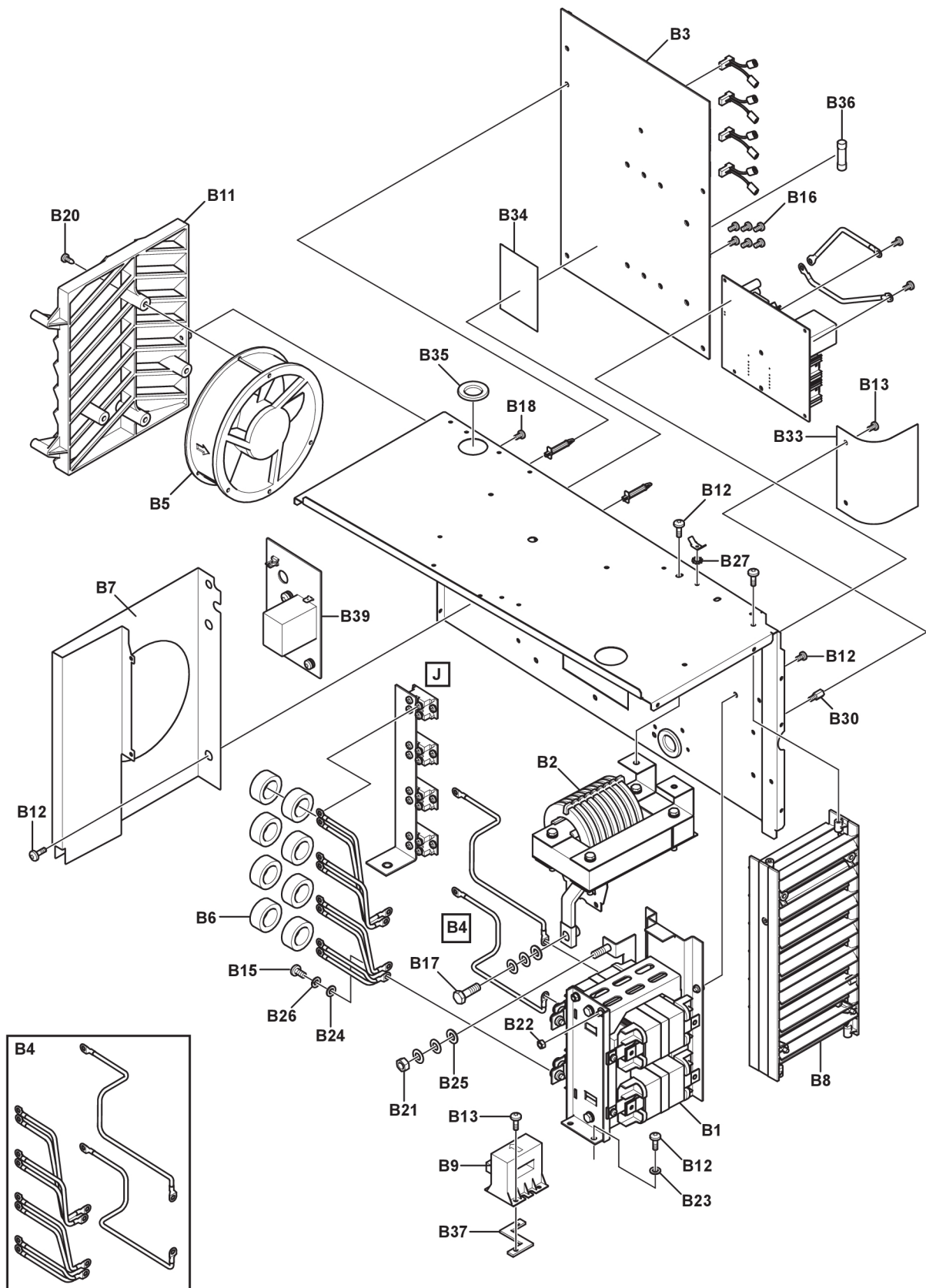
Power module

Item	Qty	Ordering no.	Denomination	Notes	Component designation
B1	1	0465 302 881	Transformer, complete	Transformer 9:1	15T1
B2	1	0465 311 881	Inductor, complete		15L1
B3	1	0440 003 884	PCBA Power board MV		15AP1
B4	1	0465 287 880	Secondary rectifier harness		
B5	1	0465 344 001	Fan		15EV1
B6	8	0455 569 006	Ferrite ring core	Core torodial amorphous	15L2 to 15L9
B7	1	0465 487 004	Air duct MV		
B8	1	0465 367 880	Louver front IP, Assembly		
B9	1	0458 063 001	Current sensor	500 A	15CS1
B11	1	0465 332 001	Fan louver bracket		
B12	22		Screw MRT	M5×8, DIN7985	
B13	7		Screw MRT	M4×8, DIN7985	
B14	5		Screw MRT	M5×12, DiN7985	
B15	4		Screw M6S	M6×12	
B16	9		Screw MRT COMBI	M6×16	
B17	2		Screw M6S	M8×20	
B18	7		Screw Remform TORX	M5×16	
B20	4		Screw RTS	ST4, 8×16	
B21	1		Nut	M8-8-A2K	
B22	2		Nut	M5-8-A2K	
B23	8		Washer BRB Steel	D10/5, 3×1	
B24	4		Washer BRB	12×6, 4×1.5	
B25	3		Washer BRB	16/8, 4×1.5	
B26	4		Cup spring	12, 5×6, 2T=0.7	
B27	1		Locking washer AZ	D10/5.3	
B29	6		Spacer	28.6 mm	
B30	6		Spacer screw	M4×15	
B33	1	0465 450 002	Auxiliary board insulation		



SPARE PARTS

Item	Qty	Ordering no.	Denomination	Notes	Component designation
B34	1	0465 496 001	Thermal protection insulation		
B35	3	0194 069 003	Rubber inlet	D 28 mm	
B36	1	0194 399 120	Fuse	600 V, 5 A S3	
B37	1	0465 588 001	Current sensor distance		
B38	1	0440 141 880	PCBA auxiliary supply		2AP2
B39	1	0440 131 880	PCBA boost converter power		17AP1



User interface

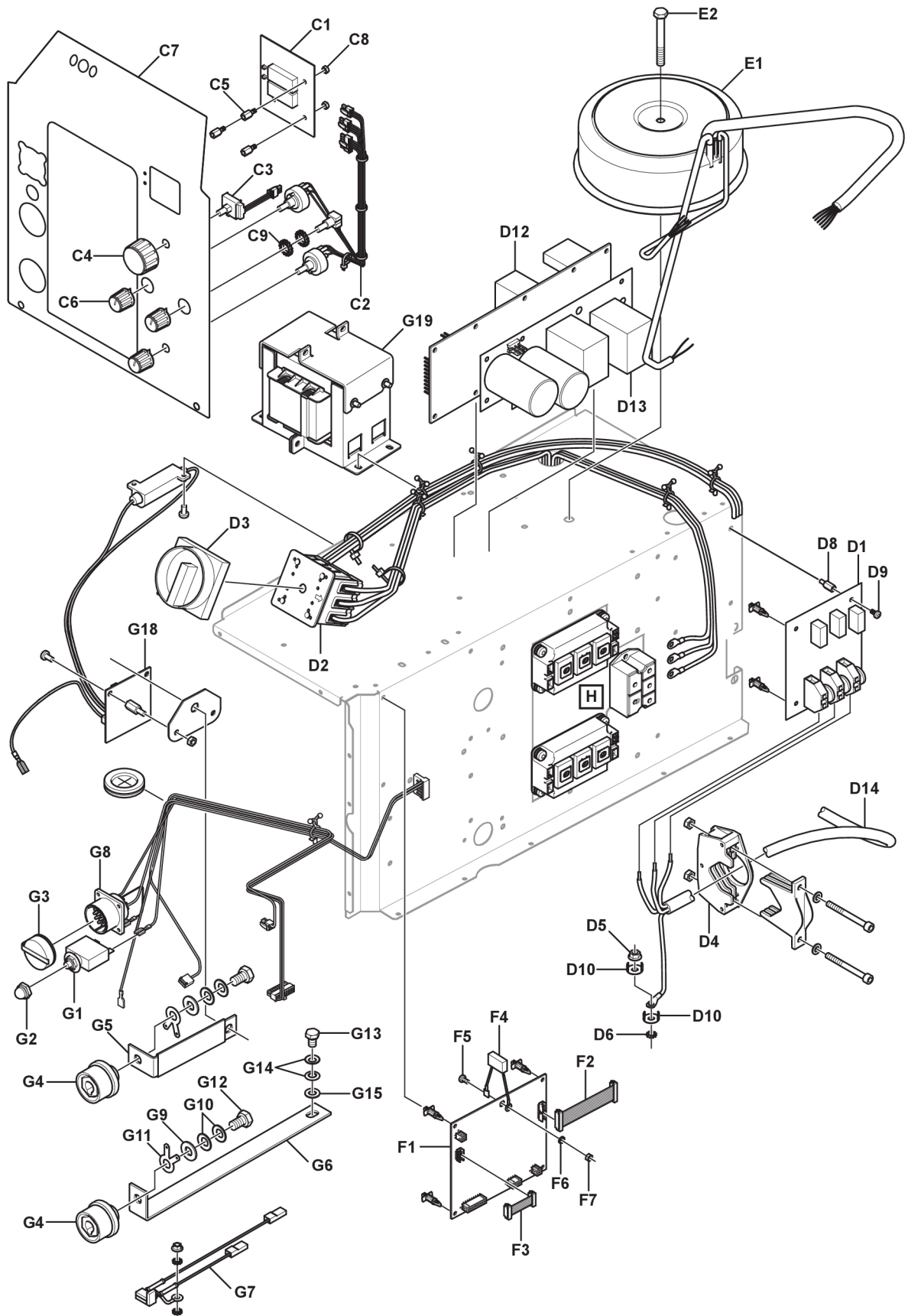
Item	Qty	Ordering no.	Denomination	Notes	Component designation
C1	1	0440 008 880	PCBA display board		1AP1
C2	1	0465 326 880	Cable with three potentiometers		
C3	1	0465 327 880	Encoder		1G1
C4	1	0321 475 893	Knob	D36-1/4"	
C5	3		Spacer screw	M4×12	
C6	3	0321 475 881	Knob	D15, 5-4	
C7	1	0465 413 003	Front decal MV	350i	
		0465 413 002	Front decal MV	400i	
C8	3		Nut M6M	M4	
C9	2		Locking washer	10.5×18	
C11	3		Washer	M4	

Mains module

Item	Qty	Ordering no.	Denomination	Notes	Component designation
D1	1	0440 018 880	PCBA mains filter		2AP1
D2	1	0465 878 001	Main switch MV		2QF1
D3	1	0465 878 002	Main switch knob MV		
D4	1	0469 950 880	Cable inlet		
D5	1		Nut M6M	M6	
D6	1		Washer lock	6.4×11 S	
D8	5		Spacer screw	M4×15	
D9	5		Screw MRT	M4×8 DIN7985	
D10	2		Washer	Cable MSG KB6.5	
D12	1	0440 136 880	PCBA boost converter control		17AP2
D13	1	0440 192 880	PCBA capacitor board		15AP2
D14	1	0468 516 898	Main cable assembly	3 m	

IPS module

Item	Qty	Ordering no.	Denomination	Notes	Component designation
E1	1	0465 323 003	Auxiliary transformer		2T1
E2	1		Screw M6S	M8×65	Kontroll

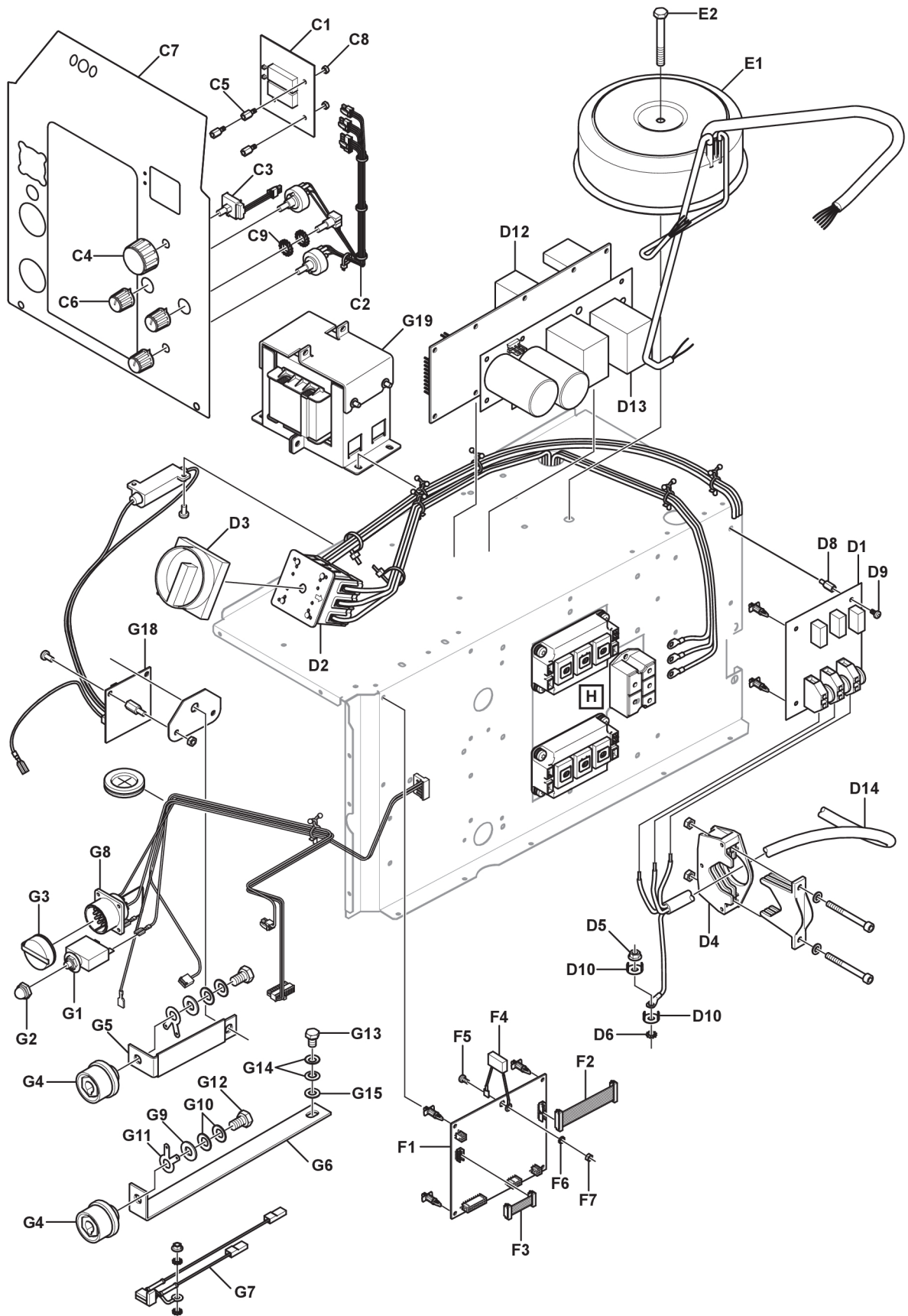


Control module

Item	Qty	Ordering no.	Denomination	Notes	Component designation
F1	1	0487 969 880	PC board control 400 V	400i	20AP1
		0487 969 885	PC board control 350 V	350i	
F2	1	0465 329 880	Flat cable w connector 20-pol		7001
F3	1	0465 349 880	Flat cable w connector 12-pol		7002
F4	1	0467 911 888	Capacitor		20C1
F5	1		Screw MRT	M4×8 DIN7985	
F6	1		Washer lock AZ	4.3×8 ST	
F7	1		Nut M6M	M4	

Secondary connection

Item	Qty	Ordering no.	Denomination	Notes	Component designation
G1	1	0193 586 102	Automatic fuse	10 A	15FU1
G2	1	0455 376 001	Protection cap		
G3	1	0465 501 001	Protection cap		
G4	2	0160 362 881	OKC machine contact	50 mm ²	XS1, XS2
G5	1	0465 309 001	Rail, inductor to OKC		
G6	1	0465 307 001	Rail, sec diodes to OKC		
G7	1	0463 082 880	Capacitor, complete		
G8	1	0538 500 204	Sleeve contact		XS3
G9	2		Washer BRB	10.5×22	
G10	4		Cup spring	20/10.2 T=1.1	
G11	2		Flat pin connector	M10 6.3×0.8	
G12	2		Screw M6S	M10×20	
G13	1		Screw M6S	M8×16	
G14	2		Cup spring	16×8.2 T=0.9	
G15	2		Washer BRB	16/8, 4×1.5	
G15.1	2		Washer lock AZ	D15/8.4	
G15.2	1		Nut M6MF-8	M8	
G18	1	0465 606 880	VRD kit		
G19	1	0465 882 880	Boost inductor assembly		17L1



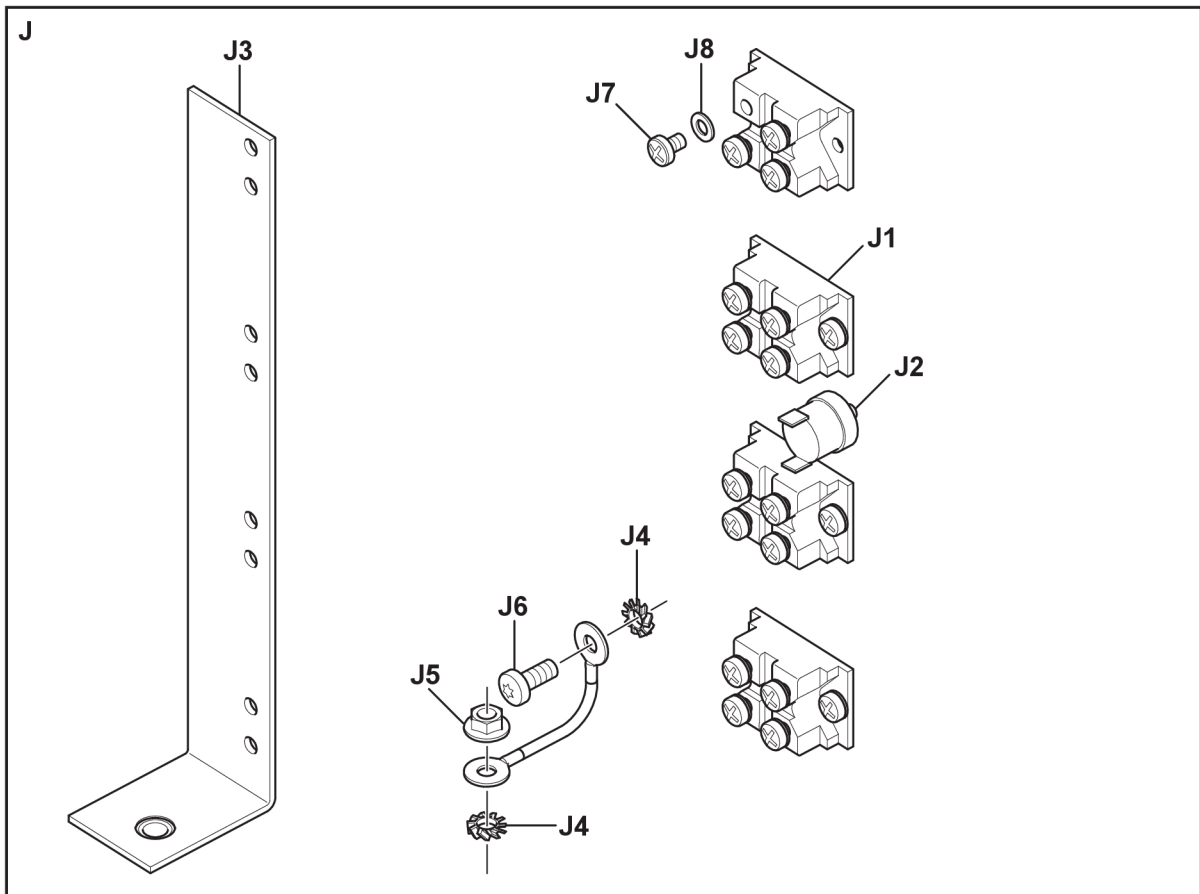
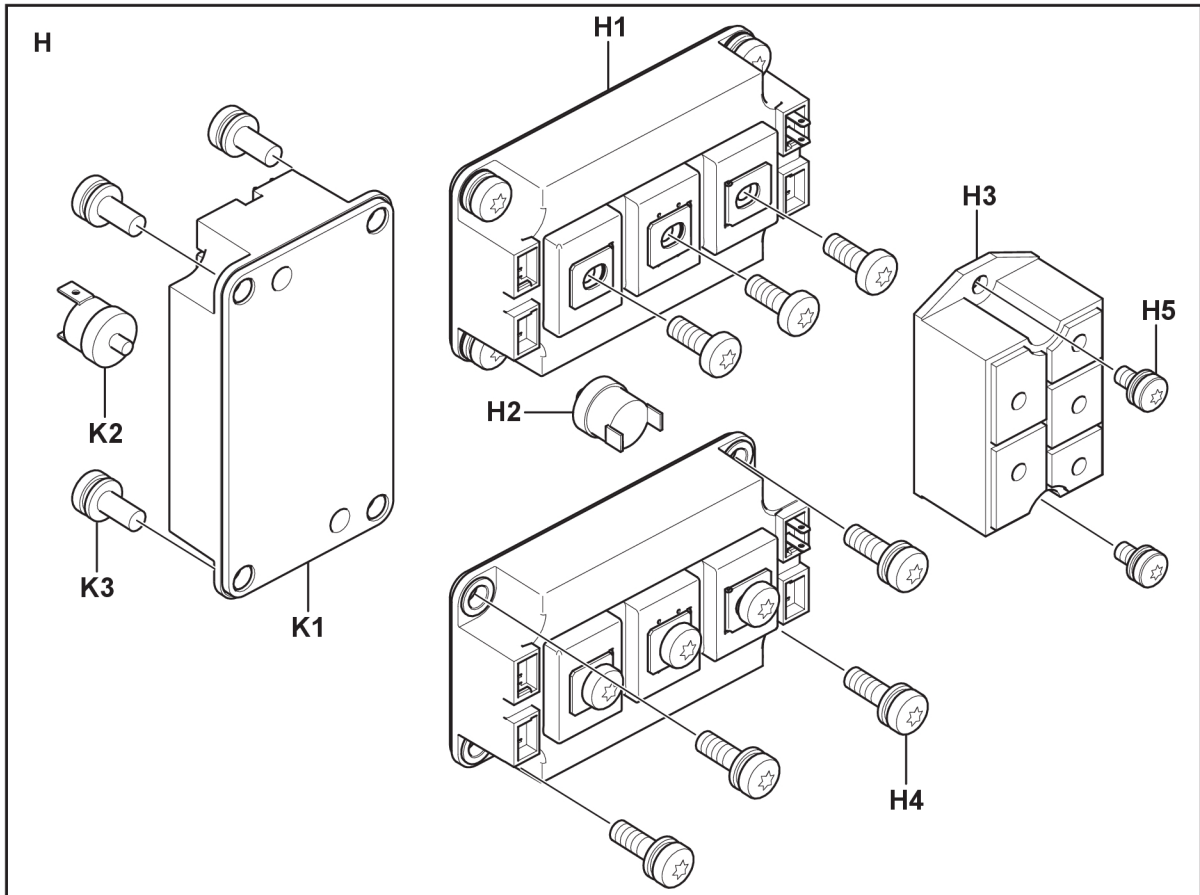
Primary inverter

Item	Qty	Ordering no.	Denomination	Notes	Component designation
H1	1	0464 503 880	IGBT module set	Includes 2 IGBT modules, 1 thermal protection insulation, 1 thermal compound and 8 screws M6×20	15PM1, 15PM2 Kontroll
H2	1	0467 864 006	Thermostat		15ST2
H3	1	0464 504 880	Rectifier set	Includes 1 rectifier bridge, 1 thermal compound and 2 screws M5×12	15BR1 Kontroll
H4	8		Screw MRT COMBI	M6×20	Kontroll
H5	2		Screw MRT COMBI	M5×12	Kontroll

Secondary rectifier

Item	Qty	Ordering no.	Denomination	Notes	Component designation
J1	1	0464 505 880	Diode set	Includes 4 diodes, 1 thermal compound, 8 screws M4×8 and 8 cup springs D8/4×0.4	15PM3 to 15PM6 Kontroll
J2	1	0467 864 006	Thermostat		15ST3
J3	1	0465 308 001	Rail, sec diodes		
J4	2		Washer lock	D10/5.3	Kontroll
J5	1		Nut M6MF-8	M5	Kontroll
J6	1		Screw MRT	DIN7985 M5×8	Kontroll
J7	8		Screw MRT	DIN7985 M4×8	Kontroll
J8	8		Cup spring	D8/4×0.4	Kontroll

Item	Qty	Ordering no.	Denomination	Notes	Component designation
K1	1	0465 913 880	Boost inverter kit	Includes 1 IGBT module, 1 thermal compound and 4 screws (M6×16)	17PM1
K2	1	0467 864 008	Thermostat		15ST4
K3	4		Screw MRT combi	M6×16	





A WORLD OF PRODUCTS AND SOLUTIONS.



For contact information visit [esab.com](https://www.esab.com)

ESAB AB, Lindholmsallén 9, Box 8004, 402 77 Gothenburg, Sweden, Phone +46 (0) 31 50 90 00

manuals.esab.com

